



From design to application
as the new kid on the block

Who am I?

Software engineer from Finland

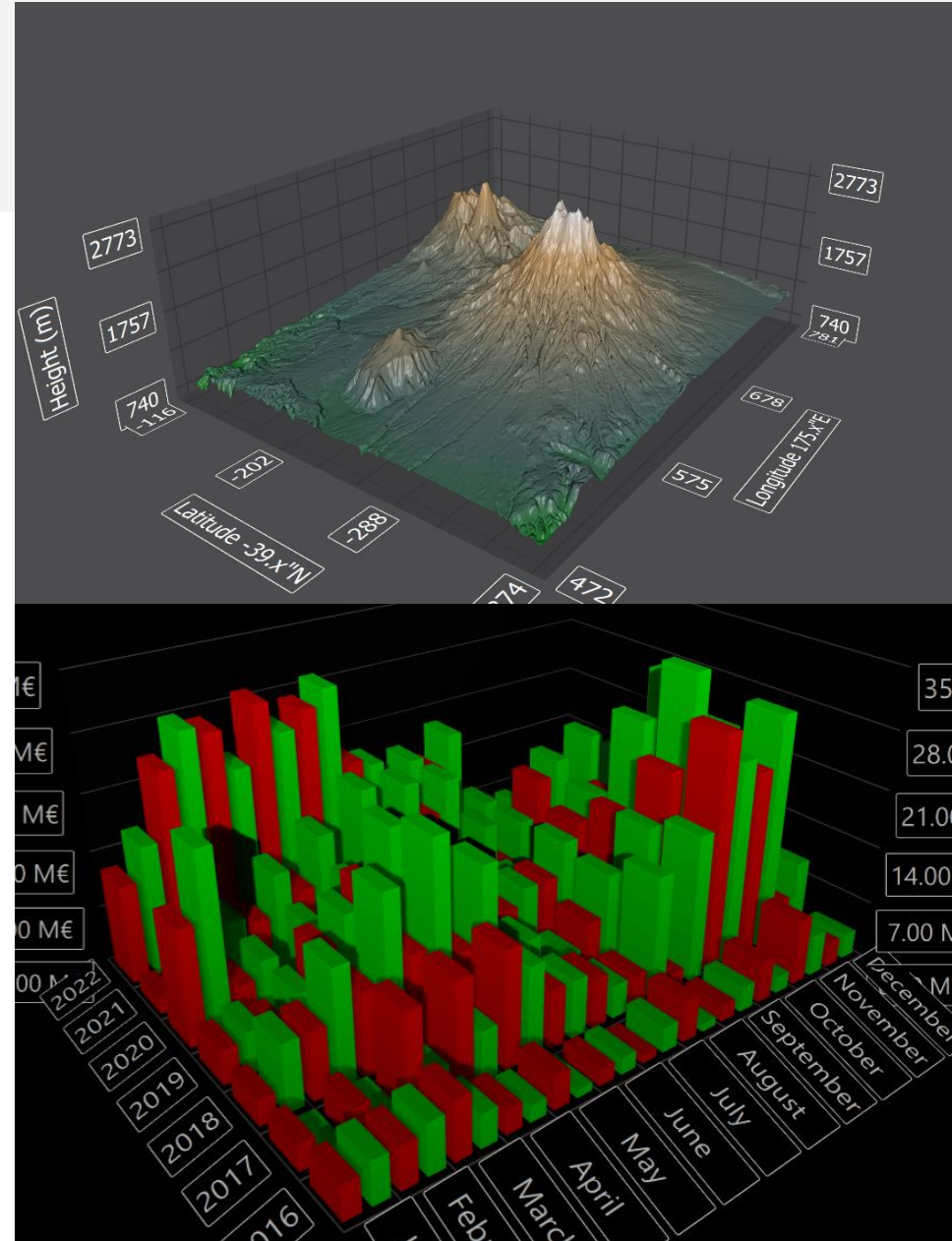
Work on QtGraphs

Graphics programming

QtGraphs

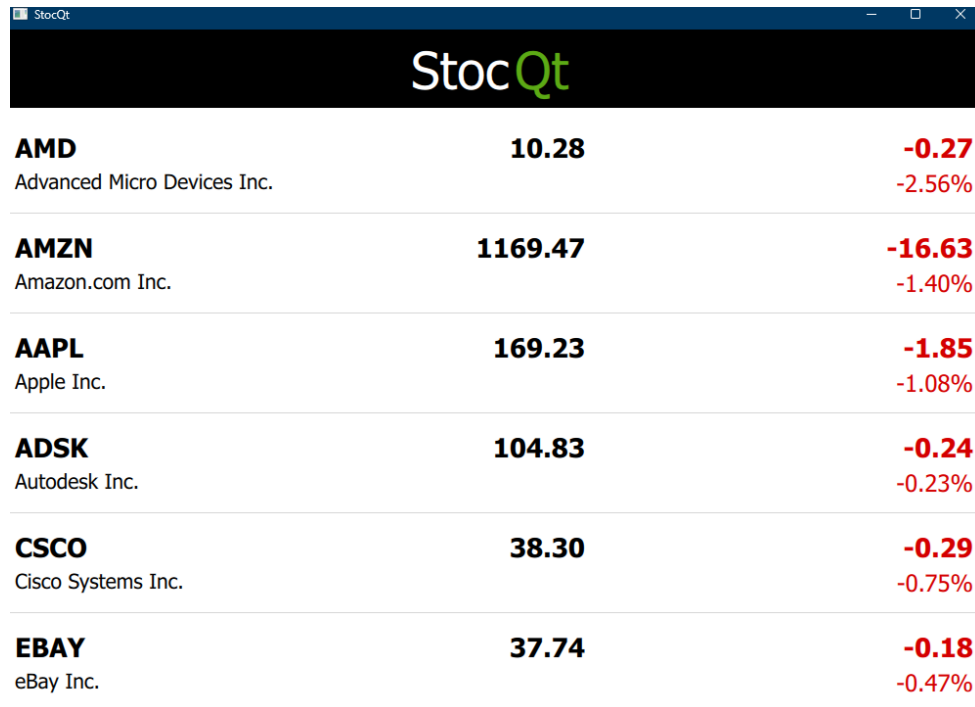
Updated Data visualization module

Built on top of Quick3D



Old StocQt

Example for Data Visualization
Design could be improved



Symbol	Price	Change
AMD Advanced Micro Devices Inc.	10.28	-0.27 -2.56%
AMZN Amazon.com Inc.	1169.47	-16.63 -1.40%
AAPL Apple Inc.	169.23	-1.85 -1.08%
ADSK Autodesk Inc.	104.83	-0.24 -0.23%
CSCO Cisco Systems Inc.	38.30	-0.29 -0.75%
EBAY eBay Inc.	37.74	-0.18 -0.47%



StocQt 2: Electric Boogaloo

- Modern
- Mobile
- Live data
- Favourites



StockQt

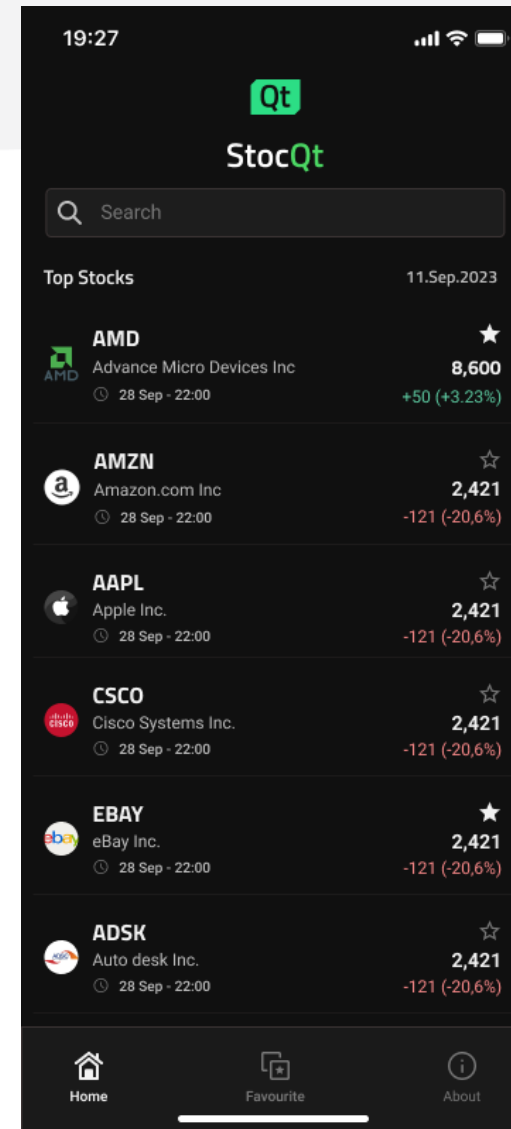
Redesign

Designer: Fatemeh Mirzaei

Simplicity and clarity

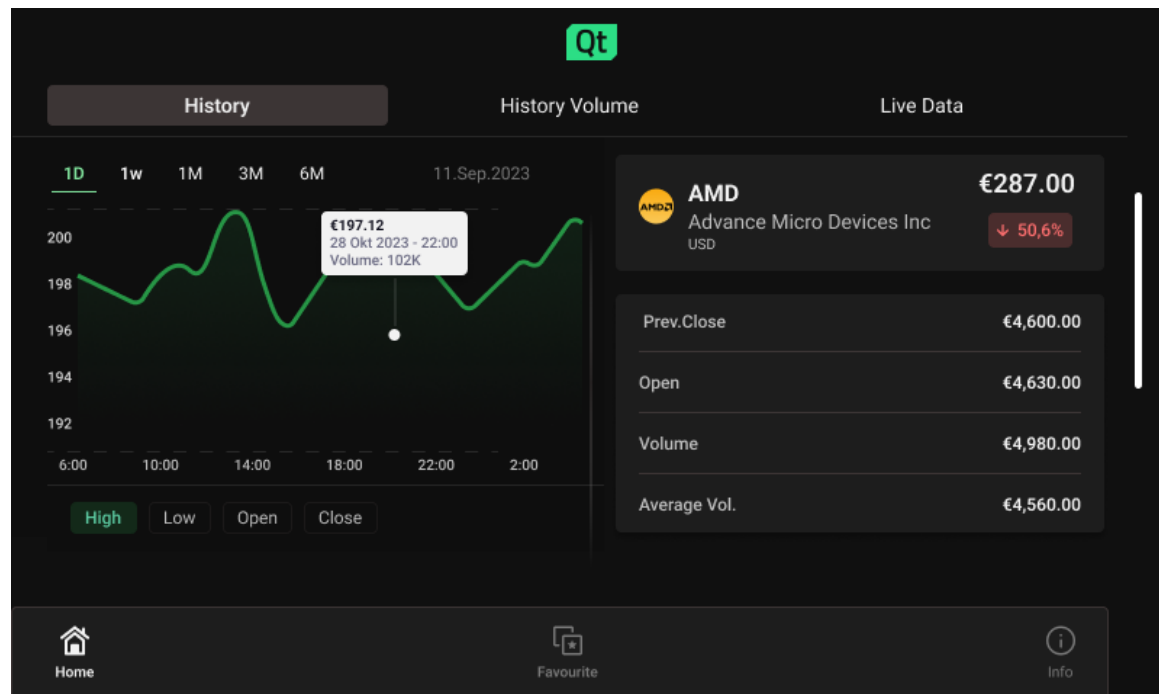
Brand primary colours and fonts

Intuitive navigation



Redesign

Portrait and Landscape
Colour code System



To Design Studio!

1. Export from figma to Design Studio
2. Add functionality



Export to Design Studio: Qt Bridge

Initial Idea: Import everything at once

Refined idea: import as parts, assemble in Design Studio

DS Qt Bridge for Figma ✕

Home Settings About

ID

Export as

Component ▾

▶ Custom Component Type

▶ Properties

▶ Snippet

▶ Imports

▼ Options

Alias Start Screen

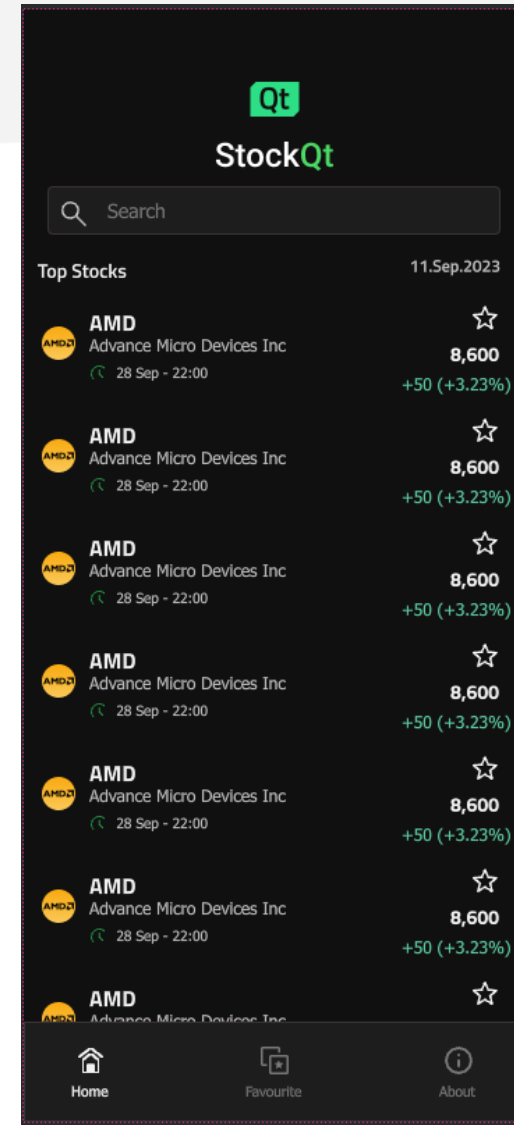
[Export](#)



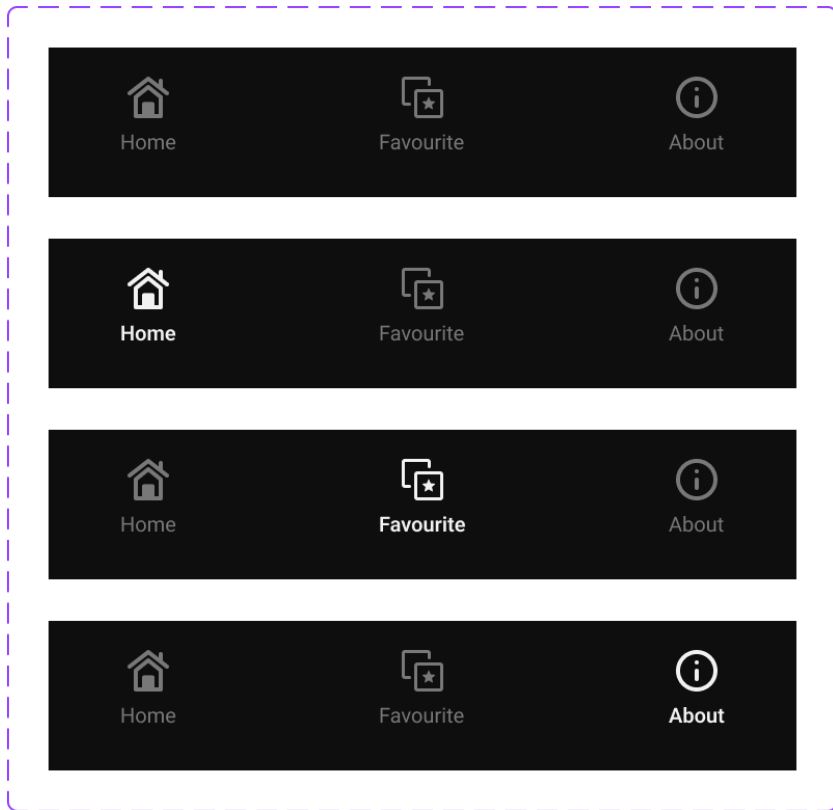
Finalization in Design Studio

- Proper Layout of UI elements
 - Different window scales
 - Portrait vs Landscape

Button functionality and view switching



Example: Navbar



Preferred size 16 W 16 H

The screenshot shows the Qt Designer interface for configuring a state machine. At the top, four state machine diagrams are visible, each with a 'When Condition' field. The fourth diagram is selected, showing the following configuration:

```
State {  
    name: "Favourite"  
    extend: "Default"  
  
    PropertyChanges {  
        target: favourite  
        color: "#f2f2f2"  
        font.weight: Font.DemiBold  
    }  
  
    PropertyChanges {  
        target: starIcon  
        iconColor: "#f2f2f2"  
    }  
},
```

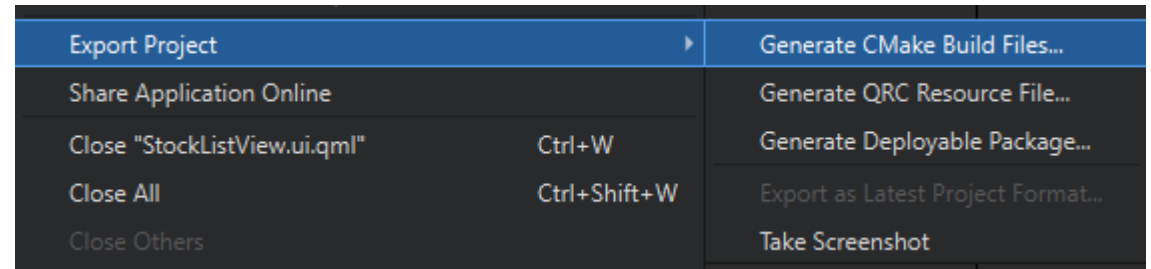
Export to Qt Creator

Design studio Export

Cmake fixing

.ui File renaming when needed

Changing things in DS still possible



Thoughts

Component importing is mostly effortless

Some minor tweaking may be required

Visualization tools are incredibly helpful for fast iteration

Editing code is completely feasible



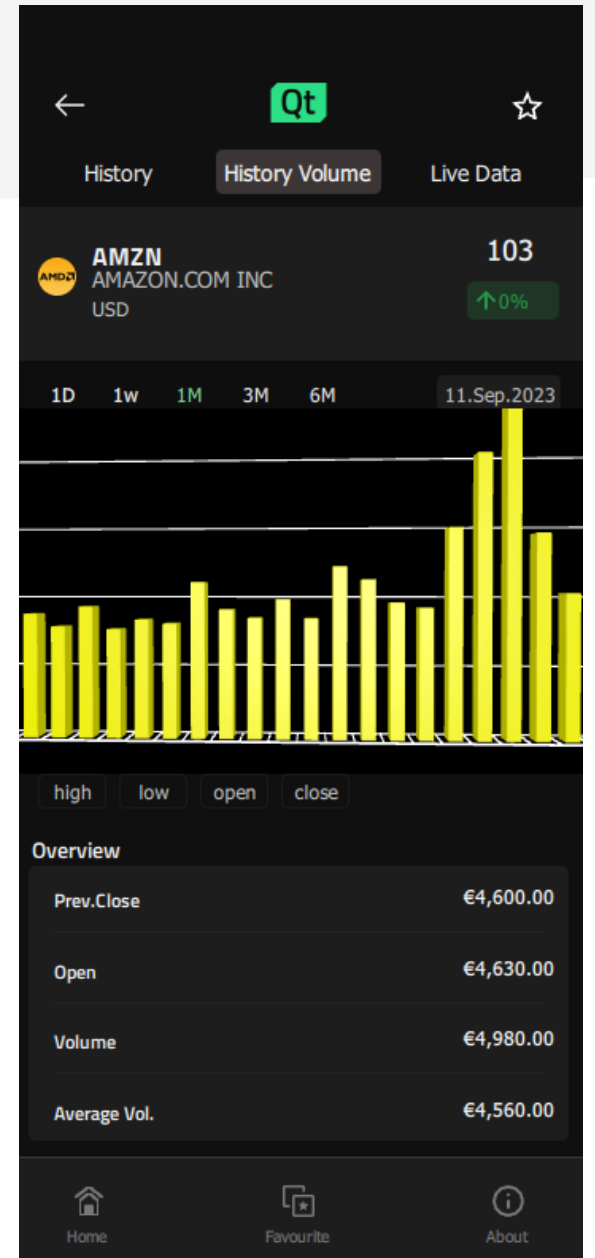
Thoughts

Exporting was a bit awkward

Design Studio -> Qt Creator was seamless

Worked without tutorial knowledge

Existing examples helped



Thank you!

Thoughts?